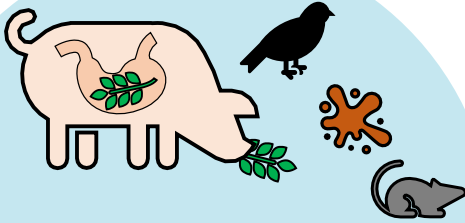


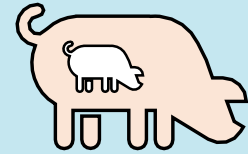
How are diseases transmitted?

Oral transmission



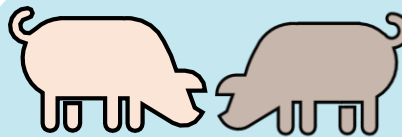
A pig normally swallows the pathogen with contaminated feed or water.

Reproductive organs



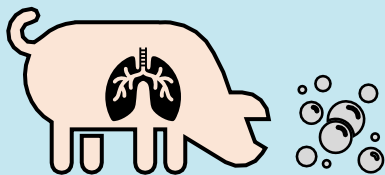
Transmission via artificial insemination or from a sow to a fetus.

Direct contact



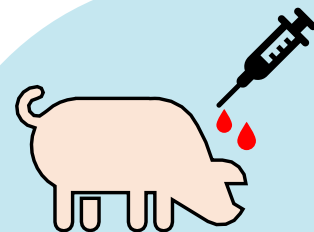
Direct contact, for example, between two animals or an animal and the environment.

Airborne



A pig inhales the pathogen into their lungs.

Blood transmission



Blood transmission via, for example, used syringes contaminated with infected blood.